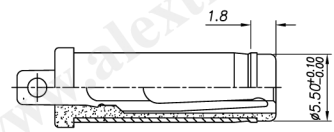
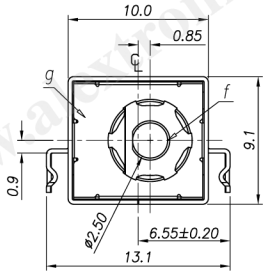


CATEGORY	DESCRIPTION	P/N #
CONNECTOR	DC Power Jack	DJ0985-11XX0-0010

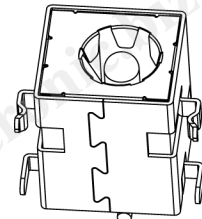
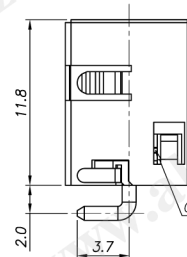
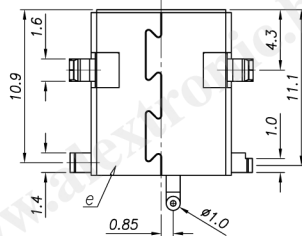
REV.	ECN NO	DESCRIPTION	REVISED	DATE
A01		New Release	jack	2009.03.22
A02	ECN090928001	新增實膠膠材質PA6T	GMC	2009.09.28

SPECIFICATION

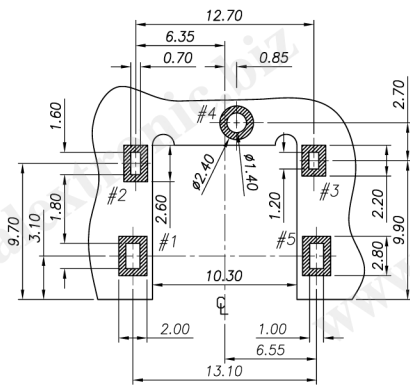
1. Voltage and Current Rating: 24V & 2A
2. Contact resistance: 30 mΩ(max.)
3. Insulation resistance: 100MΩ MIN. @ DC250V
4. Operation Temperature: -25°C~70°C
5. Withstand Voltage: 500VAC
6. Insertion force: 3.0kgf (Max.)
7. Extraction force: 0.3kgf (Max.)
8. Life testing: 5,000 cycles



MATE PLUG $\phi 5.50$

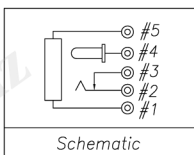
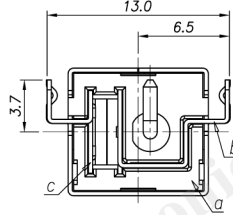


DJ0985-11XX0-0010



Recommend PCB Layout
(Jack Top View)

Tolerance: ± 0.05 mm
Recommend PCB Thickness: 1.2mm



Schematic

Plastic Material

Table 1	X	Material
1	PA66	UL94V-0
2	PBT	UL94V-0
3	PA6T	UL94V-0

Pin OD

Table 2	X	Pin_OD
5	1.65	
7	2.00	
8	2.25	
9	2.50	

g	SHIELDING	1	SUS,T=0.10mm		
f	CENTER CONTACT	1	Brass	Ni Plating	
e	SHELL	1	Brass,T=0.30mm	Ni Plating	
d	MAT	1	Brass,T=0.30mm	CuSn Plating	
c	SPORT CONTACT	1	Phosphor Bronze,T=0.30mm	Ag Plating	
b	QUIET CONTACT	1	Brass,T=0.30mm	Ag Plating	
a	HOUSING	1	See table1	Black	
NO.	PART NAME	Q'TY	MATERIAL	PLATING & COLOR	Remark

Product Drawing
ALEXTRONIC

UNLESS OTHERWISE SPECIFIED TOLERANCES	SCALE:1/1	UNIT: mm	⊕	⊖	DWG.NO:
	SIZE: A4	PAGE: 10F1	REV:A02		WI-061-436
DECIMALS: X :±0.5 X.X :±0.3 X.XX :±0.2	ANGLES: X :±2° X.X :±1°	APPROVED BY WYX	CHECKED BY PJ	PREPARED BY GMC	
CUSTOMER COPY					